

# MONTHLY MEMBERSHIP PROGRESS REPORT

LOCATION AUSTRALIA

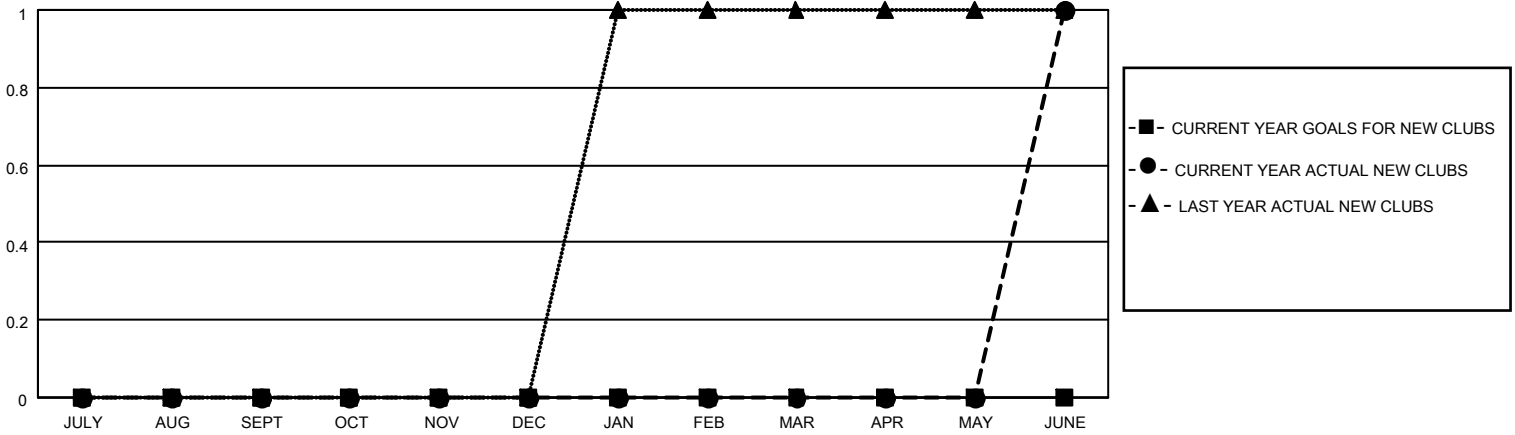
District 201V5

Results as of: 6/30/2023

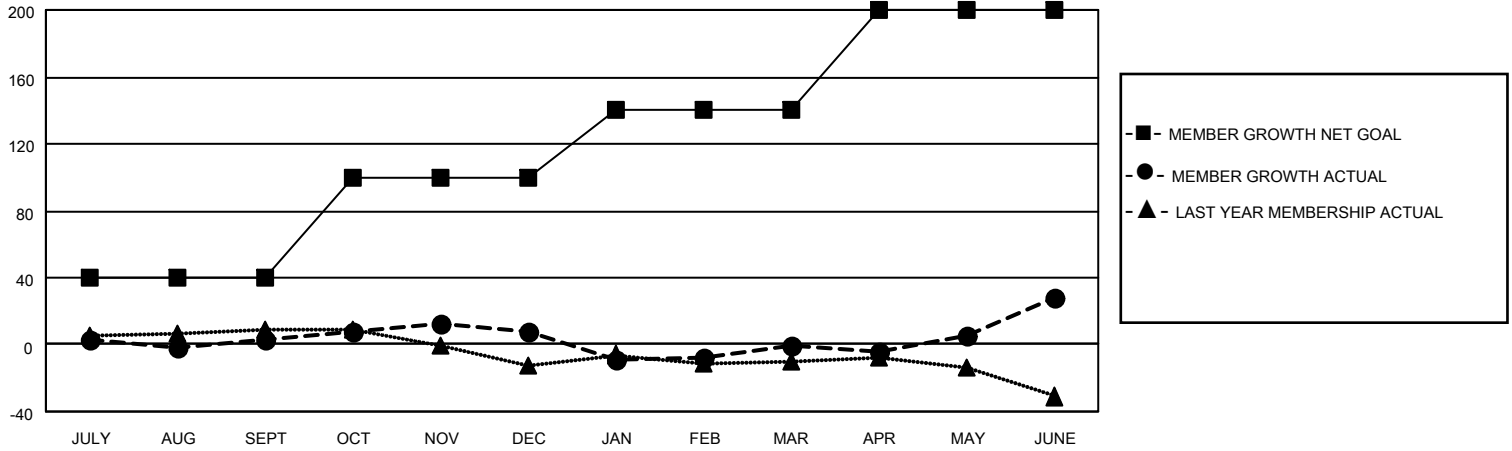
Clubs			
RESULTS FOR 2022-2023			
QUARTER	NEW CLUB GOAL	NEW CLUBS	DROPPED CLUBS
JULY/AUG/SEPT	0	0	0
OCT/NOV/DEC	0	0	0
JAN/FEB/MAR	0	0	0
APR/MAY/JUNE	0	1	0

Members			
RESULTS FOR 2022-2023			
QUARTER	MEMBER GROWTH NET GOAL	MEMBER GROWTH ACTUAL	DROPPED MEMBERS ACTUAL (including transfers)
JULY/AUG/SEPT	40	48	39
OCT/NOV/DEC	60	36	28
JAN/FEB/MAR	40	26	31
APR/MAY/JUNE	60	74	35

GOALS AND ACTUAL NEW CLUBS CUMULATIVE



GOALS AND ACTUAL MEMBERS CUMULATIVE



DROPPED CLUBS: 0	
<b>DROPPED MEMBERS</b>	
DECEASED	19
CLUB CANCELLED	0
OTHER	114
<b>TOTAL</b>	<b>133</b>

50 CLUBS OF 65 ADDED 1 OR MORE NEW MEMBERS

[CLICK HERE FOR CUMULATIVE MEMBERSHIP DATA](#)

<u>GENDER DISTRIBUTION</u>	
MALE	773 (63.15%)
FEMALE	449 (36.68%)
NON BINARY	0 (0.00%)
PREFER NOT TO ANSWER	2 (0.16%)
TOTAL FAMILY UNIT MEMBERS	
	132
FAMILY MEMBERS PAYING HALF DUES	
	68